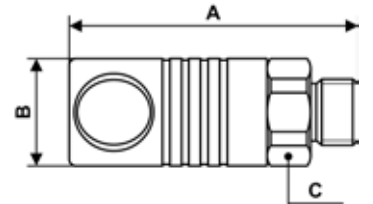


## METAL SAFETY QUICK COUPLINGS - CSM 08



Parallel male thread coupling

Profile : ISO 6150C



<b>Min / Max operating pressure</b>	<b>Flow rate at 6 bar</b>	<b>ID passage</b>	<b>Min. / Max temperature</b>
2 / 16 bar	2120 l/min	8 mm	-15 / 70 °C

Part number	Male thread	Dim. A (mm)	Dim. B (mm)	Dim. C (mm)
CSM 081151	G1/4	72	27	25
CSM 081152	G3/8	73	27	25
CSM 081153	G1/2	75	27	25